



**Ckone Energy Pvt. Ltd.**



**SUPPLIER OF QUALITY  
OILFIELD EQUIPMENT**

## PLUG VALVES

Ckone high pressure low torque Plug Valves are available in variety size & connections for easy and safe operations. They come in multiple bores and are available up to 15,000 PSI for standard service and 10,000 PSI for H<sub>2</sub>S (sour gas) service. Our plug valves are pressure balanced and have replaceable metal liners between the body and plug. Repair kits are also available to increase their life and make them perform safely for longer period.

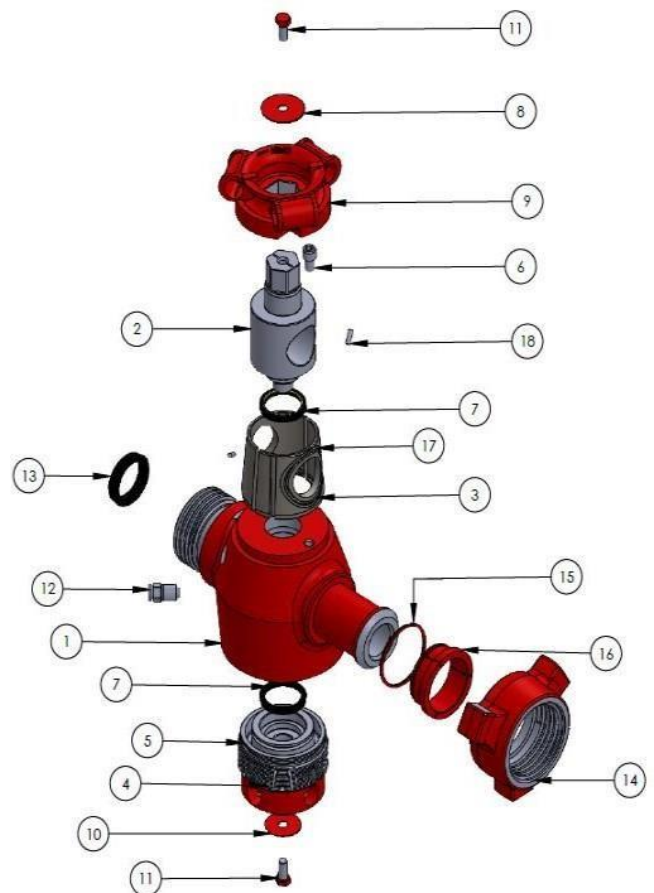


### Features:

- Ckone's plug valves are capable of withstanding high pressure and can work under extreme conditions.
- Easily interchangeable with other parts or components.
- Separate repair kit is also available with the assembly.
- Provided with all the essential documents like MTRs, Test reports.

ITEM	DESCRIPTION	QTY.
1	PLUG VALVE BODY	1
2	PLUG	1
3	INSERT SET / SEGMENT	1 SET
4	ADJUST NUT	1
5	O RING	1
6	CAP SCREW	1
7	PLUG SEAL	2
8	WASHER	1
9	HANDLE	1
10	WASHER	1
11	HEX BOLT	2
12	GREASE FITTING	1
13	SEAL RING	1
14	UNION NUT	1
15	EXTERNAL RING / CIRCLIP	1
16	SPLIT SLEEVE	1
17	O RING	2
18	DOWEL PIN	2

ITEM	REPAIR KIT	QTY.
2	PLUG	1
3	INSERT SET	1SET
5	O RING	1
7	PLUG SEAL	1
17	O RING	2



## PUP JOINT

Ckone's Pup Joints are available in sizes 2", 3", & 4" and in lengths ranging from 1 ft to 20 ft. The main types of pup supplies are Integral, Butt-welded and NPST connections. These are capable of handling variety of fluids at cold working pressure of 15000 PSI. They are also available for operating in sour service condition of 10000 PSI Cold working pressure.

End connections can also be provided in Fig 602, 1002 or any other figure as required by the customer



INTEGRAL PUP JOINT

S.NO.	'L' MM (FT)	WT Kgs
1	304.8 (1FT)	12
2	609.6 (2FT)	16
3	914.4 (3FT)	21
4	1219.2 (4FT)	25
5	1524.0 (5FT)	30
6	1828.8 (6FT)	35
7	2133.6 (7FT)	39
8	2438.4 (8FT)	44
9	2743.2 (9FT)	48
10	3048.0 (10FT)	53
11	3657.6 (12FT)	62
12	4572.0 (15FT)	76
13	6029.0 (20FT)	80



NPST PUP JOINT

\*Each size can be optimized as customer's requirements.

## FITTINGS

Ckone Integral Fitting is a high quality forged construction with wing union end connections and can be combined to suit virtually any installation. They are available in various sizes from 1" to 4" and in pressure ratings up to 15000 & 1000 PSI CWP for standard and sour service conditions.



**ELBOW MXF**



**CROSS FFFM & MMMF**



**WYE 'Y'**



**TEE MXMXF / FXFXM**



**LATERAL 45 DEG**



**LONG RADIUS ELBOW**

### **Features:**

- Ckone Integral & B/W Fittings are available 2", 3" and 4" with Fig 1502, 1002, & 602 end Union Connections
- All Fittings are available for Standard and Sour service.
- All Fittings Are Suitable for variety of high-pressure applications.
- Pressure Rating for Standard service 15,000 psi CWP & 22,500 psi test pressure for Fig 1502.
- Pressure Rating for Sour service 10,000 psi CWP & 15,000 psi test pressure for Fig 1502.

\* Each End Connection can be optimized as customer's requirements.

## Crossover / Spools

Ckone Supplies the crossovers in different sizes and connection types like Male to Female, Male to Male, and Female to Female configurations with sizes 1” to 6” and in pressure ratings from 1000 PSI to 22,500 PSI. These items are manufactured in high strength alloy steel forgings and fully heat treated under controlled conditions to assure uniform quality throughout.

Adaptor Flanges x union connection are also available from 1-13/16” to 7-1/16” flange with 1” to 6” union connection of various pressure ratings as per API 6A with integral union connection.

Spools (Adapter & Spacer) are also available from 1-13/16” to 7-1/16” with 2K, to 20K pressure rating.



**CROSSOVER MXM**



**CROSSOVER FXF**



**CROSSOVER MXF**



**ADAPTER FLANGE X FEMLE**



**ADAPTER SPOOL**

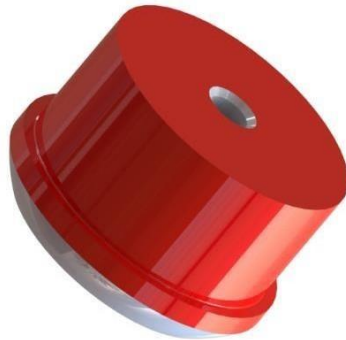
## Test Fittings / Bull Plugs

Ckone Bull plugs blanking Cap and testing Plug are available in union connections and the sizes 1” to 6” for different fig. (1502, 1002 & 602 etc) both for operating in standard and sour service conditions.

Ckone Flanges as per API 6A such as 6B and 6BX Weldneck, Blind, Test, Integral are available in size 1-13/16” to 7-1/16” with 2K, to 20K in PSL -1, 2 & 3 & different temperature Rating on the customer requirement.



**MALE BLANK**



**MALE TEST BLANK**



**FEMALE BLANK**



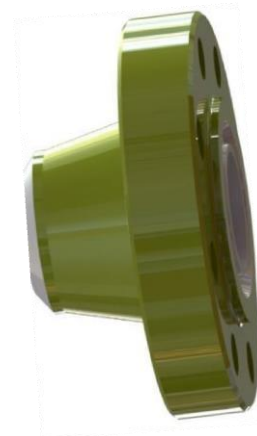
**FEMALE TEST BLANK**



**TEST FLANGE**



**BLIND FLANGE**



**W/N FLANGE**

Ckone also Supplies Various Class flanges as per ASME B16.5 covering sizes from 1/2” to 24”, pressure ratings from class 150 to 2500 and temperature rating from -20°F to 1500°F, and also provide the JIG flange.

## HAMMER UNIONS

Ckone provide the Hammer unions from forged alloy steel for use in both Standard & sour Service. as per the customer requirement, varying sizes from 1” m 500 PSI to 20000 PSI.



	ATING (PSI)			
				SOUR SERVICE
			C.W.P.	T.P.
50	500	750	N/A	N/A
100	1000	1500	N/A	N/A
101	1000	1500	N/A	N/A
200	2000	3000	2000	3000
206	2000	3000	2000	3000
207	2000	3000	2000	3000
211	2000	3000	N/A	N/A
400*	4000	6000	4000	6000
602	6000	9000	6000	9000
1002*	10000	15000	7500	11250
1003*	10000	15000	7500	11250
1004	10000	15000	7500	11250
1502	15000	22500	10000	15000
2002	20000	30000	N/A	N/A
2202	N/A	N/A	15000	22500

\*Indicated having different pressure rating due to Other design factor

5”, 6”, 12” : Figure 400, Cold Working Pressure 2,500 PSI & Test Pressure 4,000 PSI

5”, 6” : Figure 1002 Butt weld, Cold Working Pressure 7,500 PSI & Test Pressure 11,250 PSI Std. Service 4”,

5” : Figure 1003 Butt weld, Cold Working Pressure 7,500 PSI & Test Pressure 11,250 PSI Std. Service 5”, 6”

: Figure 1002 Butt weld, Cold Working Pressure 5,000 PSI & Test Pressure 7,500 PSI Sour Service 4”, 5” :

Figure 1003 Butt weld, Cold Working Pressure 5,000 PSI & Test Pressure 7,500 PSI Sour Service **Sealing :**

- For Low pressure services metal to metal seal are recommended.
- For medium pressure mostly an O ring is provided in the male connection
- For High Pressure Seal Ring are recommended.
- Fig. 1502, also available in butt weld configuration.

## SWIVEL JOINT

Ckone Swivel joints which are metallic pipe fittings with integral ball bearing swivel feature included and available in both standard and sour service conditions. generally, two categories of swivel joint, one is Long Sweep Swivel Joint and the other one is Short Sweep Swivel Joint. also available in different end connections like (MXF), (MXM), (FXF) and Line pipe threaded, welding and flanged connections.

### Features

- All Styles are available in nominal size 2", 3" and 4" with 1502, 602 Union End
- All ball races are either flame hardened, carburized & hardened or snap-in stainless steel
- All Swivel Joints are field repairable and easy to use. Repair kits are available.
- All joints are specially heat treated to achieve optimal hardness
- All materials meet ASTM and/or AISI standards
- 100% quality control and testing
- Sour gas Swivel Joints are manufactured in accordance with the National Association of Corrosion Engineers (NACE) standard MR-0175.
- Used in high pressure applications like choke and kill line, cementing and circulating hoses, fracturing, Cementing, etc.
- Standard service is used up to 15,000psi and tested at 22,500psi.
- Sour gas Service is used up to 10,000psi and tested at 15,000psi.

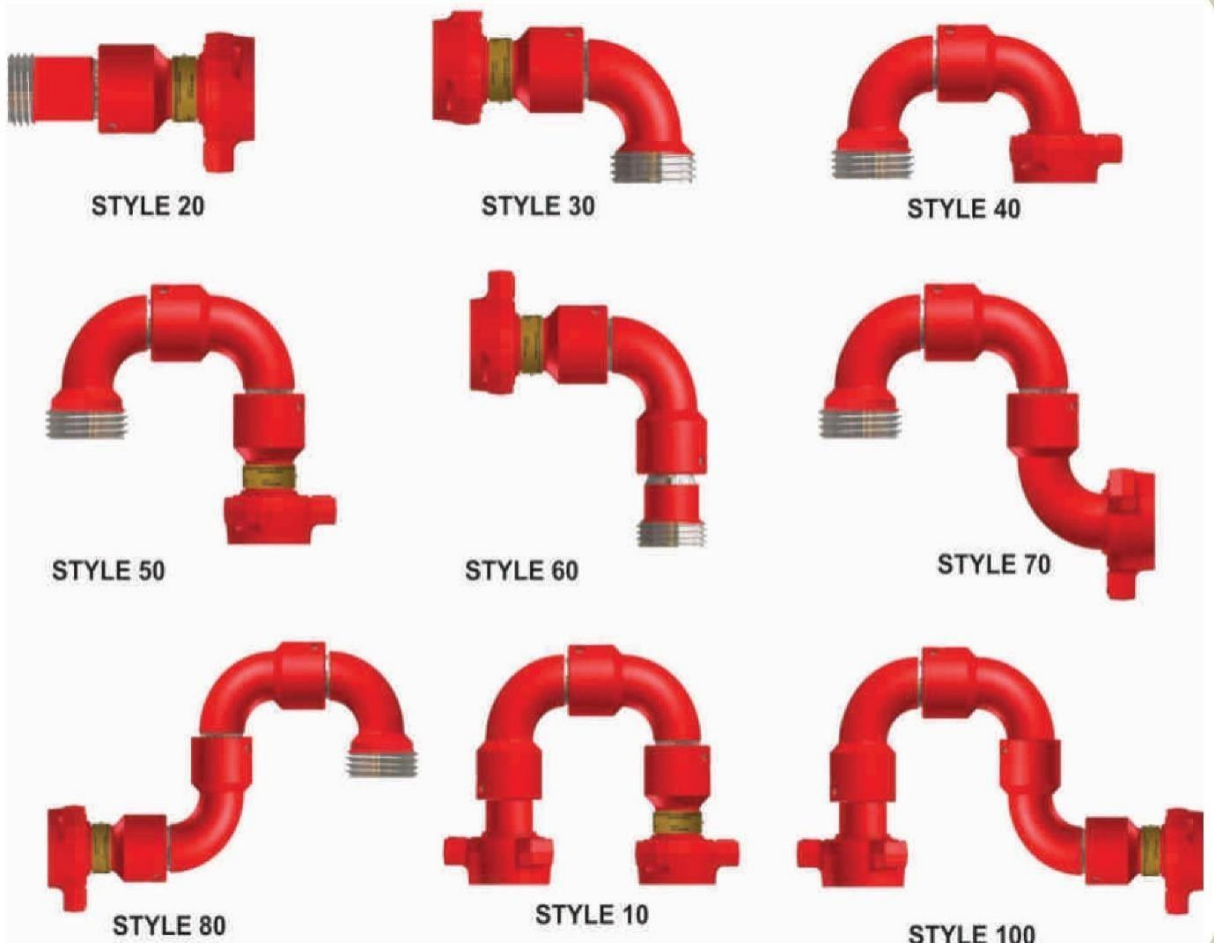


**LONG RADIUS SWIVEL JOINT**



**SHORT RADIUS SWIVEL JOINT**





**STYLE & TYPES**